

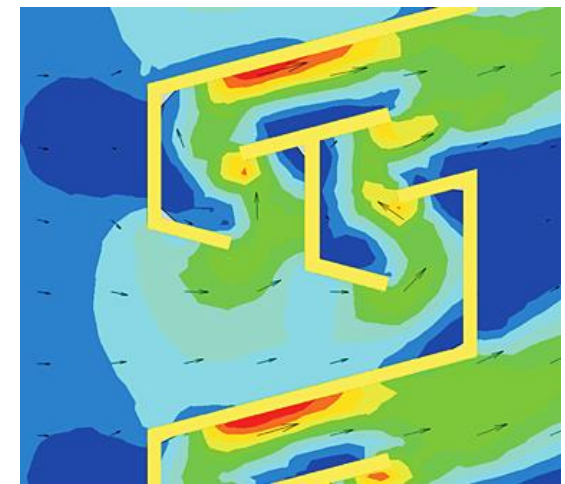
# JAZO Zevenaar

Improving protective housing designs



Use integrated design and CFD analysis with Simcenter FLOEFD for Creo

JAZO has **saved money** and gained a **competitive edge** with its customers



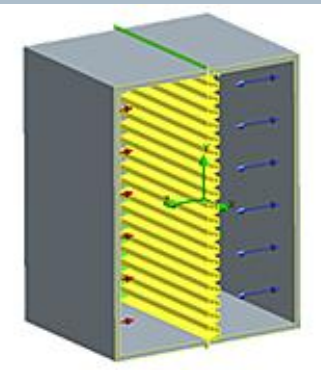
# JAZO Zevenaar

## Improving protective housing designs



- Communicate form, fit and function of designs with customers in less than one day
- Save three weeks of time required for each prototype test
- Eliminate physical testing costs

### Simcenter FLOEFD for Creo saves time and money



Boundary conditions definition



Velocity distribution

- Use integrated design and CFD analysis with Simcenter FLOEFD for Creo

**"We can show the finished design to our customer complete with how it looks and works in just one day. That's a savings of three weeks and thousands of euros for each model."**

Henry Aldering, Technical Director at JAZO